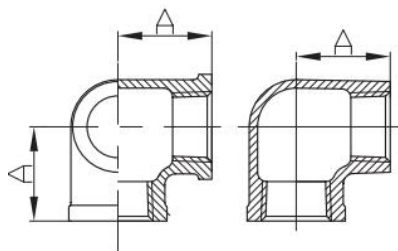


Malleable iron side outlet elbow



- Certificate: FM Approved / UL Listed
- Size: 1/2" - 2" (DN 15 - DN 50)
- Pressure: class150
- Dimensions: ANSI B16.3
- Material: Malleable iron ASTM A197
- Threaded: NPT ASME B1.20.1
- Surface: Black / Electrical galvanized / Hot-dip galvanized



Available size (class 150)

SIZE		A (MM)
1/2"	DN15	28
3/4"	DN20	33
1"	DN25	38
1 1/2"	DN40	50
2"	DN50	58