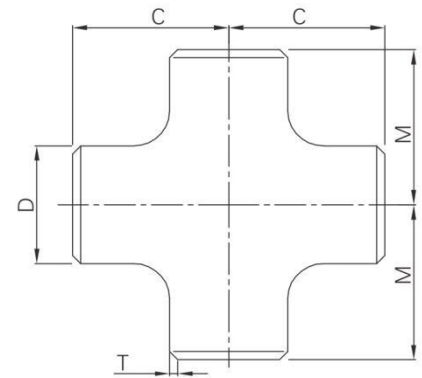


American Butt Weld Cross



- Certificate: ISO
- Standard: ASME B16.9
- Material -1: Carbon steel ASTM A234, WPB
- Material -2: Stainless steel ASTM A403, SS 304, SS 316
- Type: Equal cross
- W.pressure: Equal to same seamless pipe
- End: Straight edges / bevelled for welding
- Surface: Original / Sandblast / Black painting / HDG



Available size

SIZE			T (mm)			C (mm)	M (mm)
NPS	DN	OD (mm)	Sch10	Sch40	Sch80		
1/2"	DN 15	21.3	2.11	2.77	3.73	25	25
3/4"	DN 20	26.7	2.11	2.87	3.91	29	29
1"	DN 25	33.4	2.77	3.38	4.55	38	38
1-1/4"	DN 32	42.2	2.77	3.56	4.85	48	48
1-1/2"	DN 40	48.3	2.77	3.68	5.08	57	57
2"	DN 50	60.3	2.77	3.91	5.54	64	64
2-1/2"	DN 65	73.0	3.05	5.16	7.01	76	76
3"	DN 80	88.9	3.05	5.49	7.62	86	86
4"	DN 100	114.3	3.05	6.02	8.56	105	105
5"	DN 125	141.3	3.40	6.55	9.53	124	124
6"	DN 150	168.3	3.40	7.11	10.97	143	143
8"	DN 200	219.1	3.76	8.18	12.7	178	178
10"	DN 250	273.0	4.19	9.27	15.09	216	216
12"	DN 300	323.8	4.57	10.31	17.48	254	254
14"	DN 350	355.6	6.35	11.13	19.05	279	279
16"	DN 400	406.4	6.35	12.7	21.44	305	305
18"	DN 450	457	6.35	14.27	23.83	343	343
20"	DN500	508	6.35	15.09	26.19	381	381
24"	DN 600	610	6.35	17.48	30.96	432	432

Note: Thickness can be Sch5, Sch10, Sch30, Sch40, Sch80, Sch120, Sch160, STD, XS, XXS, 5S, 10S, 40S, 80S, etc.