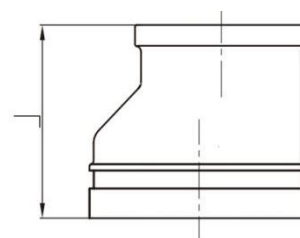


Grooved Eccentric Reducer With Threaded Outlet



- Certificate: FM Approved / UL Listed
- Size: 4"×2 1/2" - 6"×3" (DN 100×65 - DN 150×80)
- Pressure: 300PSI
- Dimensions: ANSI B16.3
- Material: ASTM A536, GRADE 65-45-12, QT450-10
- Threaded: ASME B1.20.1, ISO 7-1, GB 7306
- Surface: P: Painted E: Electroplated B: Black S: Epoxy G: Hot-dip Galvanized



Available size

SIZE		OD SIZE	L (MM)
4"×2 1/2"	DN100×DN65	114.3X76.1	102
5"×3"	DN125×DN80	139.7X88.9	127
6"×3"	DN150×DN80	165.1X88.9	140